



Location : Badalgaun, Kavre District, Nepal



# PROPOSAL TEMPORARY SHELTER

## BACKGROUND

On Saturday, April 25, 2015 an earthquake measuring 7.8 on the Richter scale hit Nepal and devastated the central and mid-western regions of the country. The death toll has already exceeded 6,000, while more than 13,000 have been reported injured. Approximately 8 million people in 35 districts have been affected. As per the latest government data, 2 million people live in severely affected areas.

Kavre District lies in the central region, east of Kathmandu. As per the data from the Government of Nepal, more than 18,000 houses in the district have been severely damaged. Badalgaun is a village located in Kavre district, where the community is largely dependent on agriculture and cattle herding for their daily livelihood. Due to the earthquake, most of the houses in this village have been razed to the ground. With the monsoon season fast approaching, the villagers have very little time to rebuild their homes. Therefore, this project aims to construct six temporary shelters in order to provide weather-appropriate refuge to approximately 120 individuals in Badalgaun.

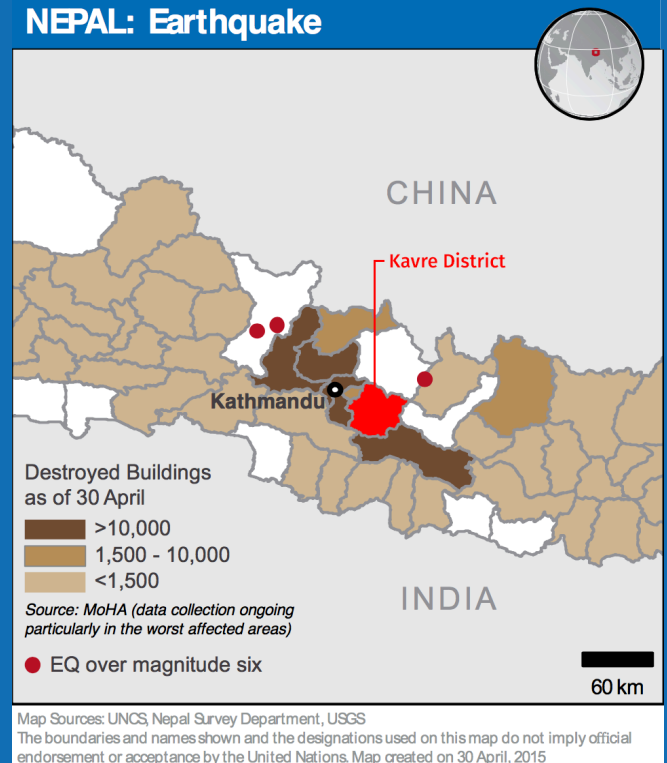
## TARGET POPULATION

Ek Pahila Foundation has been working hand-in-hand with the administration of Shree Saraswoti Secondary School, a government-funded school located in Badalgaun. A total of 225 students and 17 teachers form the school community, of which 100 students and 8 teachers are local residents of Badalgaun.

During the past year, our organization has helped to establish a science laboratory, provide desks and benches, reconstruct the classrooms for the kindergarten section, and provide learning materials for the students. Our long-term mission is to initiate farming projects to achieve a sustainable income for the school and enable it to maintain its physical infrastructure, provide better salaries, and purchase educational materials.

However, due to the earthquake, all local students and teachers from the school have lost their homes and are now living in the open air, makeshift plastic shelters, and animal sheds. Due to these circumstances, school functions have been suspended indefinitely. The future of the school is now uncertain.

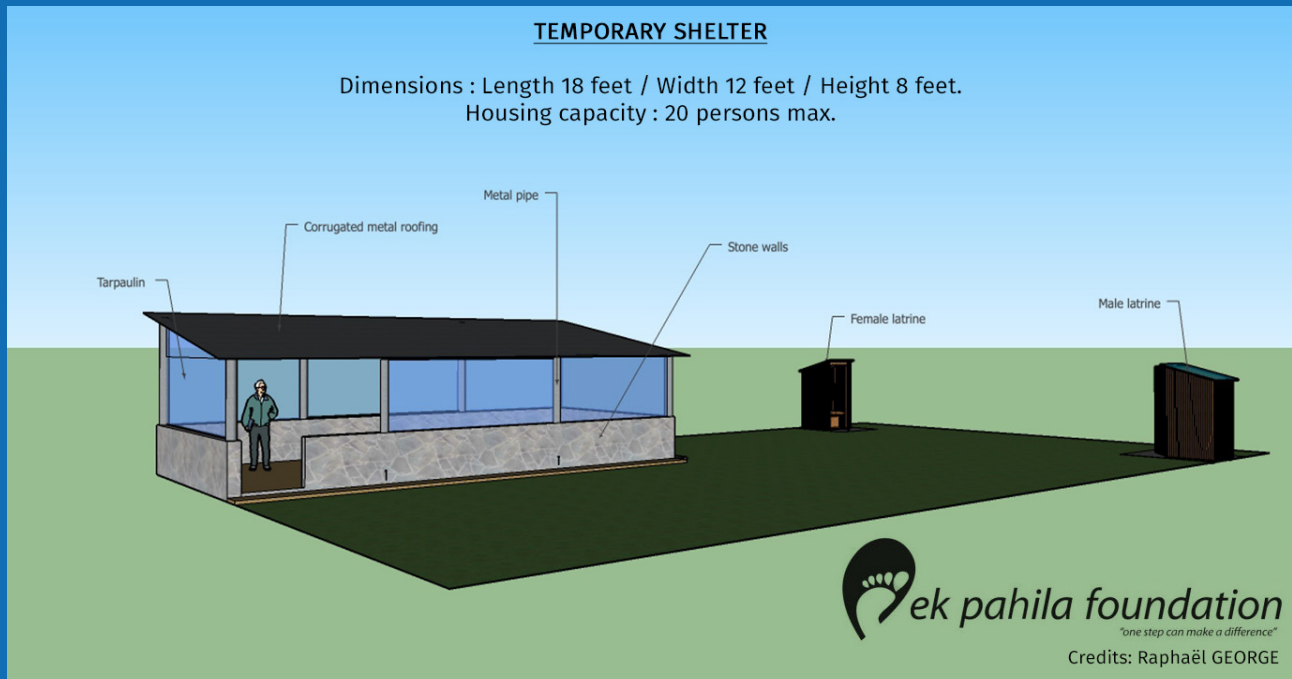
## NEPAL: Earthquake



Source: OCHA, Situation Report No. 7 (as of 30 April 2015)

# CONSTRUCTION OF TEMPORARY SHELTERS

In order to provide refuge to 100 local students, as well as 8 teachers and their families, 6 temporary shelters will be built in the village. The shelters will be constructed using stones, metal pipes, corrugated metal rooftops, tarpaulin, cement and concrete. These raw materials will be purchased from the nearby town of Dhulikhel and transported to the village. These shelters are designed with 3-foot stonewalls to protect the occupants from debris, water flow, and other dangers, and they each house approximately 20 people. In addition, two latrines for every shelter will be constructed using tarpaulin and bamboo sticks. The school community has unanimously decided that since these shelters are for their benefit, the parents, teachers and students will volunteer to help construct the shelters.



## TIMELINE FOR CONSTRUCTION

The construction of the shelters will begin as soon as possible. Our operations director is ready to plan and coordinate the actions with the community and the various providers. Each shelter will be built within 10 days of starting the construction process. Our goal is to have 6 shelters constructed before the monsoon season begins in June.

### Requested amount:

The cost of building one shelter with two latrines is estimated at USD 3,000. In total for the construction of six temporary shelters, a total of USD 18,000 will be required.

## ABOUT OUR ORGANIZATION

Ek Pahila Foundation is a non-profit organization established in 2011 in France and registered in Nepal under the same name. It aims to help poorly-funded community schools in Nepal by refurbishing the educational facilities, providing assistance for further infrastructural development, and implementing income generating projects through which the school and its community can mutually benefit.

Since 2011, Ek Pahila Foundation's projects have benefited more than 1000 students. Our organization has fundraised over 20 000 euros and partnered with organizations such as Médico Lions Club, Rotaract, la Fondation Solucom, le Monde est un bijou, la Lozère Nouvelle and various private donors.

### ORGANIZATION DETAILS

Emails: [ekpahilanepal@gmail.com](mailto:ekpahilanepal@gmail.com),

### ORGANIZATION REGISTRATION NUMBER IN FRANCE

W353009607

Website : <http://ekpahila.blogspot.fr>

To support us: <http://ekpahila.blogspot.fr/p/support-ek-pahila-nepal.html>

### ACCOUNT DETAILS

Bank: Societe Generale Bank code: 30003

Code guichet: 01756

Account number: 000 50 11 51 17

RIB: 83

BIC: SOGEFRPP

For Europe (SEPA): FR 76 3000 3017 5600 0501 15 11 783

